

Life Without Barriers Education Charter

Life Without Barriers Education acknowledges Aboriginal and Torres Strait Islander peoples as the Traditional Owners and Custodians of this country and their connection to land, water and community. We pay our respect to them, their cultures and customs and to their Elders past, present and emerging.

We believe that reconciliation must live in the hearts and minds of all Australians. We are committed to an ongoing journey towards truth telling and reconciliation. We recognise and value the contribution of Aboriginal and Torres Strait Islander young people, employees, parents and carers, and the communities in which we work across Australia as we continue our reconciliation journey together.

Life Without Barriers Education is for young people of high school age looking for a different way of doing school.

Life Without Barriers Education philosophy:

Education is a human right and provides pathways to positive and equitable futures.

Life Without Barriers Education aligns with The Alice Springs (Mparntwe) Education Declaration on Educational Goals for Young Australians (2019) as follows:

Goal 1: The Australian education system promotes excellence and equity

Goal 2: All young Australians become:

- confident and creative individuals
- successful lifelong learners
- active and informed members of the community

Life Without Barriers Education ensures that young people have equal access to educational opportunities by removing systemic barriers to education and providing the necessary resources and support for holistic learning success. Young people are at the centre of their learning journey, seeing themselves as learners and developing agencies, skills and talents for future pathways. Relationships held in an atmosphere of trust are key in Life Without Barriers Education.

Vision:

Thriving, flexible, culturally responsive, inclusive, and fun schools that are hubs of community connection and learning.

Purpose:

Hearing the voices of young people in all we do creates purpose for the school community. The school community responds by providing a quality, flexible, young person-centred education that celebrates every individual, fostering a sense of belonging, and providing the necessary resources for future pathways and success.

Values:

Life Without Barriers Education values are the foundation of everything we do and help shape a school culture and environment where everyone feels safe and valued.

Relationships: Relationships are at the heart of the teaching and learning experience and we respect, support and build strong, positive connections between young people, staff, and the community.

Respect: We value diversity and individuality, creating a culture of respect where everyone is treated with kindness and unconditional positive regard. It is a privilege to journey with young people who choose the Life Without Barriers Education community.

Responsive: We partner with families and community to find solutions. We are adaptable and attentive to the needs of young people and ensure young people's voice in their decisions.

Imagination: We embrace imagination in education, valuing student creativity and exploration as pathways to personal, more meaningful learning.

Courage: We have the courage to take risks and step out of our comfort zones walking alongside young people, to face challenges with confidence and resilience. We are a school community with a high expectations culture where young people are change leaders.

Reconciliation

Life Without Barriers Education are committed to taking meaningful action to advance reconciliation by working with Reconciliation Australia to implement Reconciliation Action Plans. Life Without Barriers Education schools embed the Narragunnawali (Reconciliation in Education) RAP framework, driving reconciliation in education by building relationships, respect and opportunities in the classroom, around the school and with the community. Aboriginal and Torres Strait Islander perspectives and ways of knowing, being and doing will be woven through all aspects of the schools' culture, learning, relationships and governance.

Education Teaching and Learning Model

The Life Without Barriers Education Teaching and Learning Model assists principals, school leaders, teachers, young people and parents/carers to work together in strong, safe and effective learning communities that create and sustain better outcomes for young people. The Life Without Barriers Education Teaching and Learning Model consists of the following components:

Education Vision

Thriving, flexible, culturally responsive, inclusive, fun schools that are hubs of community connection and learning.

Education Pedagogy

The Life Without Barriers Education Pedagogy is grounded in three integrated models:

1. Learning Theory Model

- Zone of Proximal Development

2. Common Ground Practice Model

- CARE Practice
- WOW Practice

3. Life Without Barriers Education Practice Model

- Domain 1: Teaching and Learning
- Domain 2: Wellbeing and Young Person Voice: From Belonging to Action
- Domain 3: Community and Stakeholder Engagement
- Domain 4: Leading: Improvement, Innovation and Change

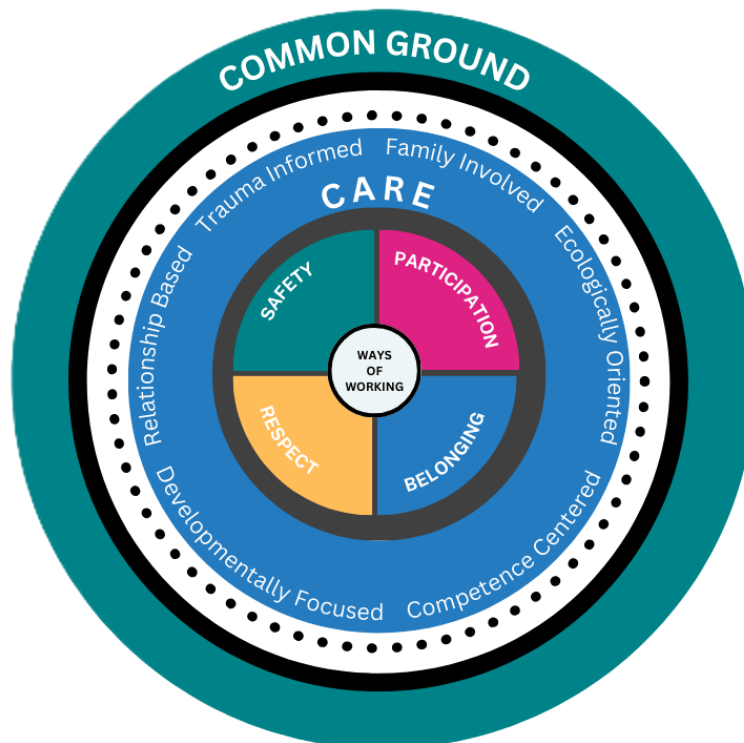
Learning Theory Model

Life Without Barriers Education guides learning through The Zone of Proximal Development (ZPD) model. ZPD is a learning concept developed by Lev Vygotsky. It explains the gap between:

1. What a learner can do on their own, and
2. What they can do with support from someone more knowledgeable

We teach and learn within the zone of proximal development - the space in which young people learn, practice, and achieve. We scaffold within the zone of proximal development to support student success and minimize unnecessary struggles, allowing young people to use their prior knowledge while receiving guidance and practice opportunities to construct new knowledge.

Common Ground Practice Model



1. Care on common ground

CARE on Common Ground is a therapeutic staff and organisational model of practice to create conditions for change. The six core principles of CARE are embedded in staff practice: being developmentally focused, trauma informed, family involved, relationship based, competence centred and ecologically oriented. School staff are trained and competent in the CARE model, bringing the six principles into all aspects of the school's operation.

2. Ways of working (WoW) on common ground

WoW on Common Ground is a therapeutic, relational model of practice to bring people together in transformational ways. The four ways of working; Respect, Safety, Participation and Belonging, guide relationships, interactions, and decisions within the school community.

- Respect is respect for self, others and the environment.
- Safety is how we create physical and emotional safety.
- Participation is about having a go and the right to negotiate how we participate.
- Belonging is about fostering a place for everyone.

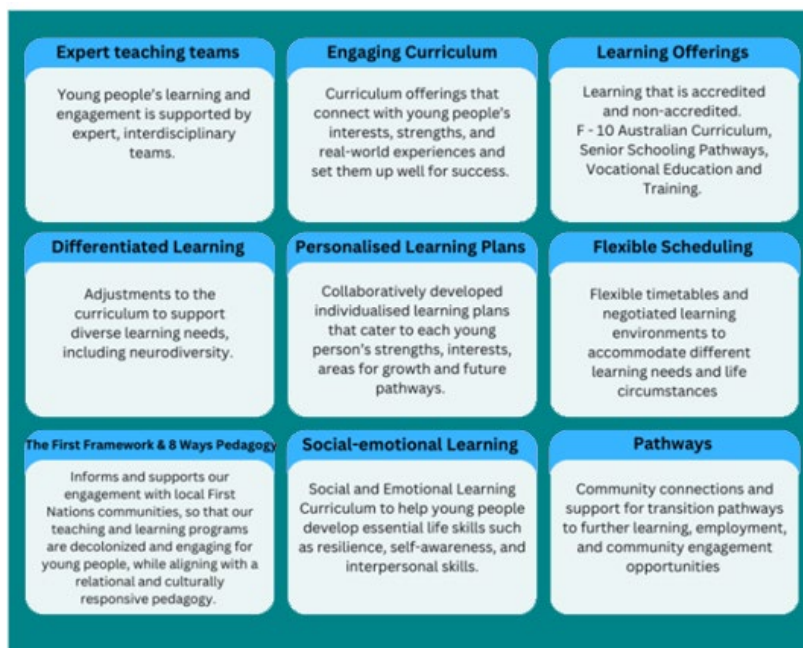
Education Practice Model

The Life Without Barriers Education practice model is outlined within four interrelated domains.



Teaching and Learning

Intentional teaching and learning strategies are implemented across the school to achieve clearly defined goals that prioritise the engagement, wellbeing, and academic progress of all young people. These include:



Wellbeing and Young Person Voice: From Belonging to Action

As young people develop a sense of belonging within the learning community, they pay attention to and act on their learning

We create a school culture where unconditional positive regard means every young person feels valued, connected, and empowered. Through a holistic and inclusive approach, we foster high expectations, and ensure equitable opportunities for cultural safety, expression and dignity, personal growth (including mental and physical wellness), lifelong learning, and meaningful participation in society.

Community and Stakeholder Engagement

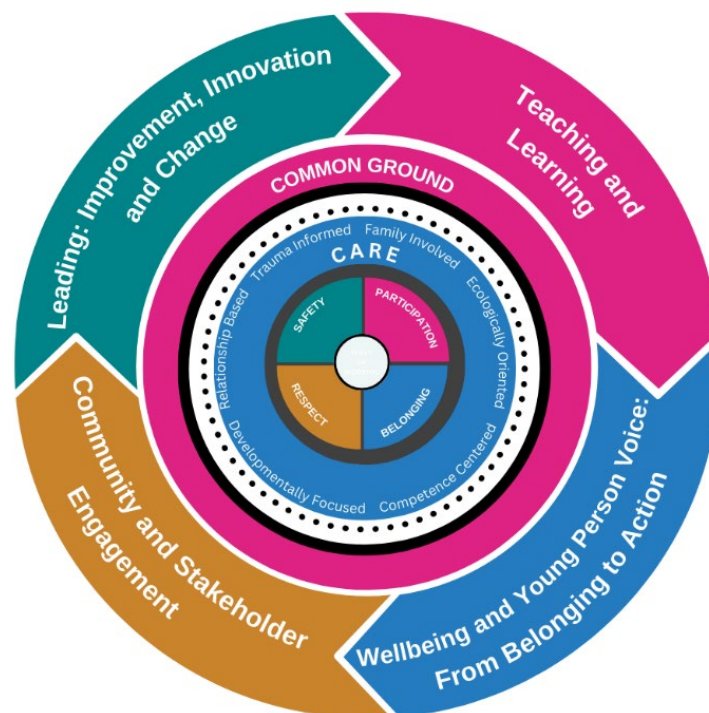
Education is a collaborative effort that brings together young people, families, educators and the community. Well established community and stakeholder engagement ensures shared responsibility and responsiveness to the education and future pathways for young people. Community collaboration provides a platform to collectively address challenges, ensure alignment to community need, celebrate achievements and improve the learning and wellbeing of young people.

Leading: Improvement, Innovation and Change

School leaders ensure the integrity and interconnectedness of each teaching and learning pillar. They support an inclusive culture, promote continuous professional learning and collaboration among staff and lead ongoing school wide improvement practice.

The Life Without Barriers Education pedagogy model brings together the vision, the common ground practice model and the education practice domains.

This integrated model emphasises the interconnectedness of effective education practice and the relational and trauma informed approaches of CARE and WoW to create a common ground where the school community learns together in a supportive, responsive and thriving educational environment.



Child Protection:

We are committed to the protection and safety of the young people we support, including from intentional and unintentional harm caused by individuals and/or from our processes and systems. We ensure all staff, volunteers, and people in contact with young people have mandated working with children clearances. We are committed to acting in the best interests of young people. We listen to and act on young people's own views about what helps to create a safe school environment.

At Life Without Barriers schools, voice matters.
Together, we'll create a learning
experience that helps young people grow,
succeed, and build the future they and their
communities want.

Welcome to a place where everyone can truly thrive